

Legende

Baugrundaufschlüsse

- Bohrung
- Kleinrammbohrung
- Schurf

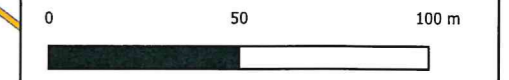
LANDESAMT
FÜR STRASSENBAU
UND VERKEHR



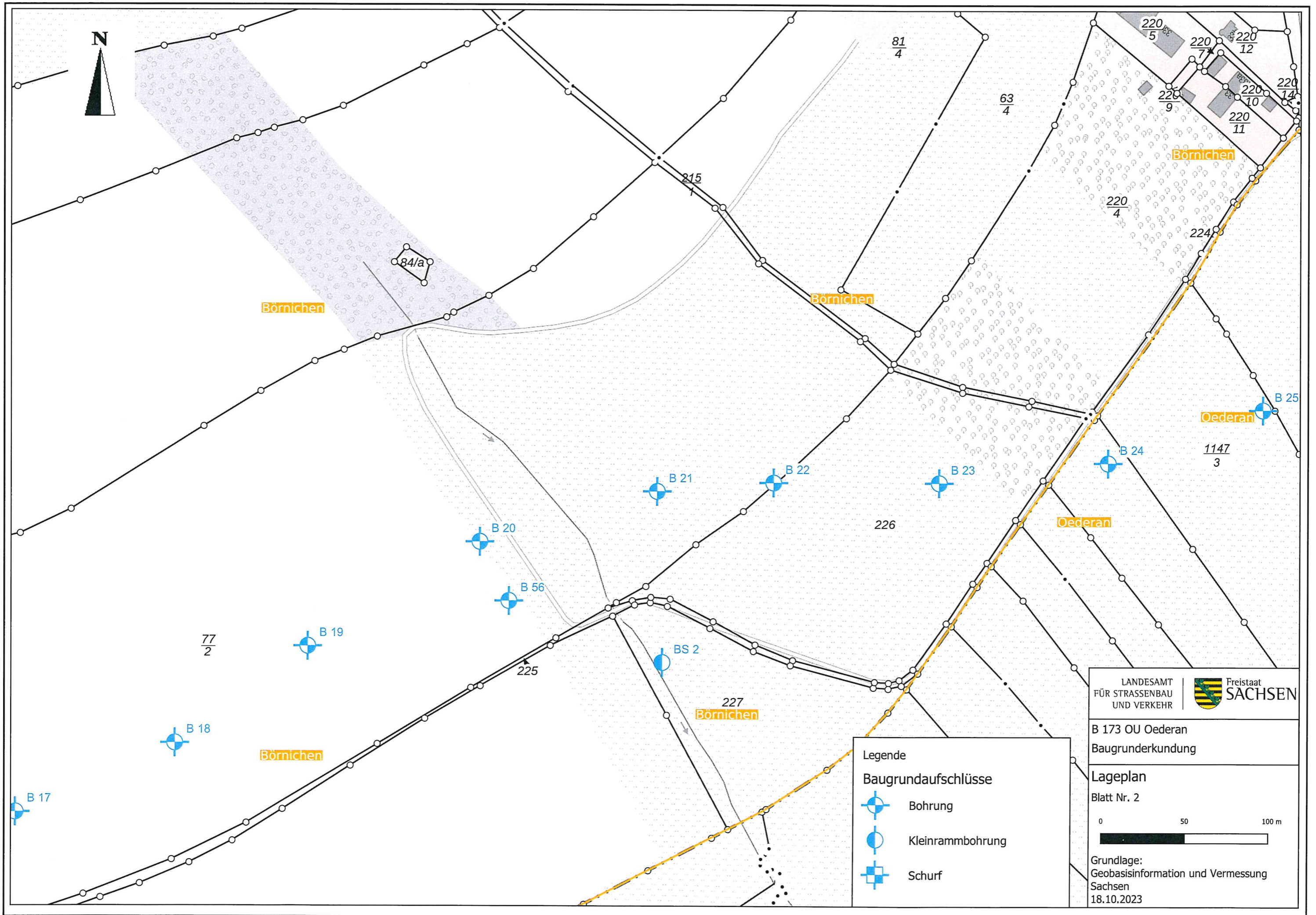
Freistaat
SACHSEN

B 173 OU Oederan
Baugrundaufschlüsse

Lageplan
Blatt Nr. 1



Grundlage:
Geobasisinformation und Vermessung
Sachsen
18.10.2023

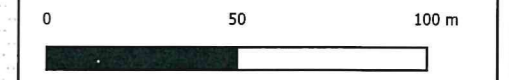


LANDESAMT
FÜR STRASSENBAU
UND VERKEHR

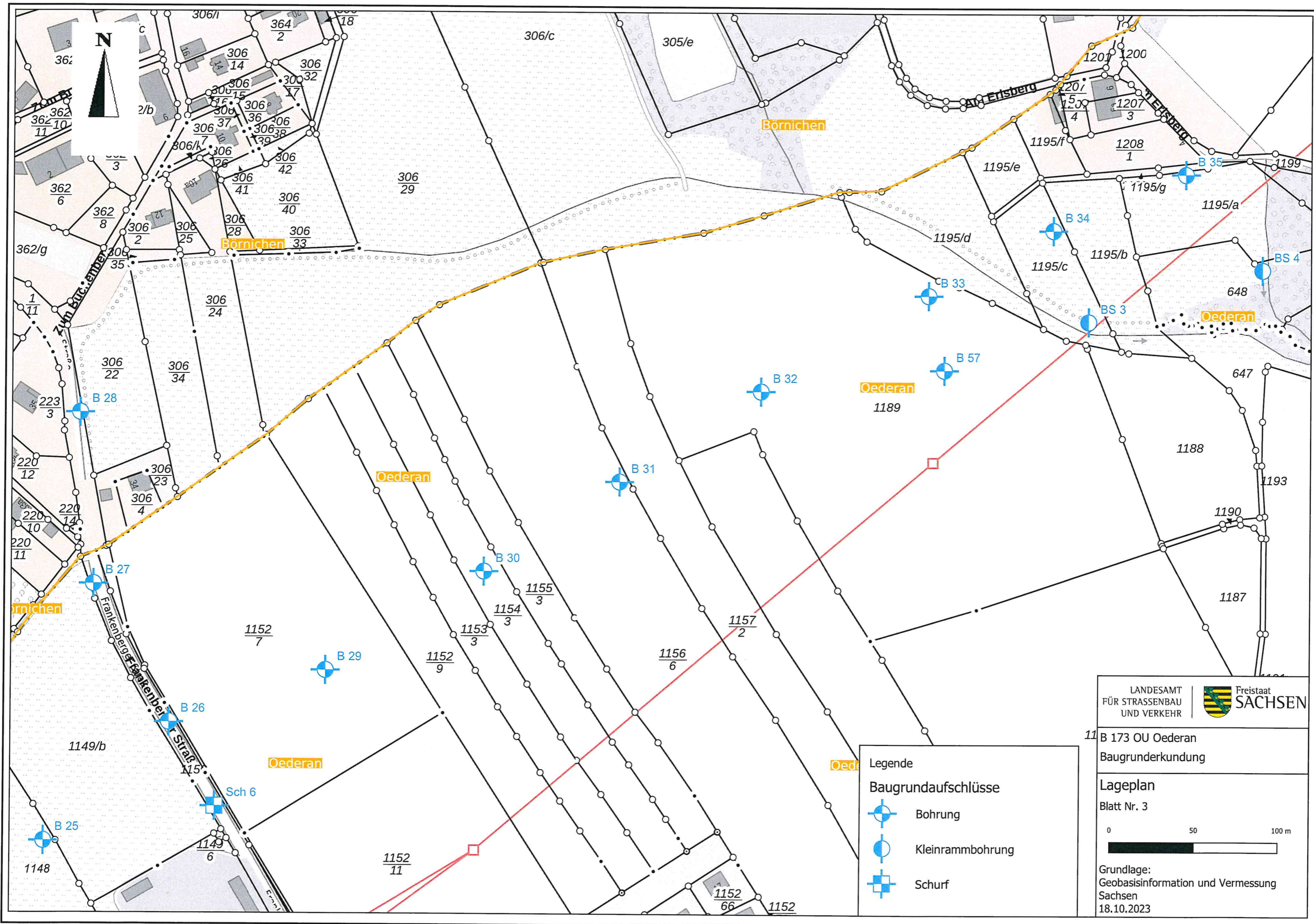
Freistaat
SACHSEN

B 173 OU Oederan
Baugrundaufschlüsse

Lageplan
Blatt Nr. 2



Grundlage:
Geobasisinformation und Vermessung
Sachsen
18.10.2023



LANDESAMT
FÜR STRASSENBAU
UND VERKEHR

Freistaat
SACHSEN

B 173 OU Oederan
Baugrunderkundung




Lageplan
Blatt Nr. 3

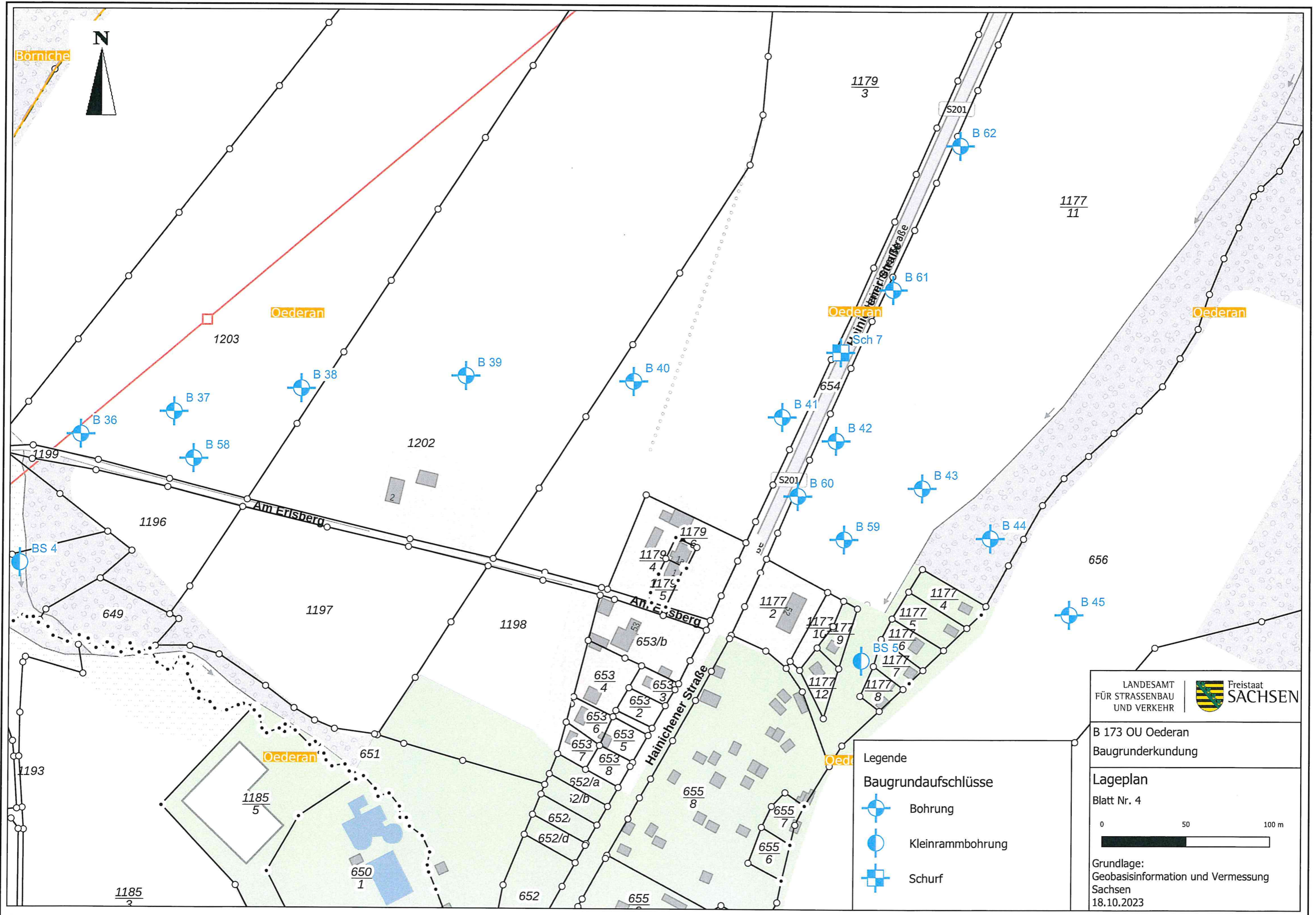


Grundlage:
Geobasisinformation und Vermessung
Sachsen
18.10.2023

Legende

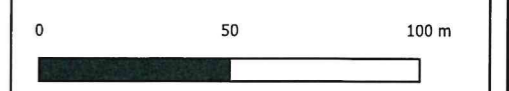
Baugrundaufschlüsse

-  Bohrung
-  Kleinrammbohrung
-  Schurf





B 173 OU Oederan
Baugrunderkundung

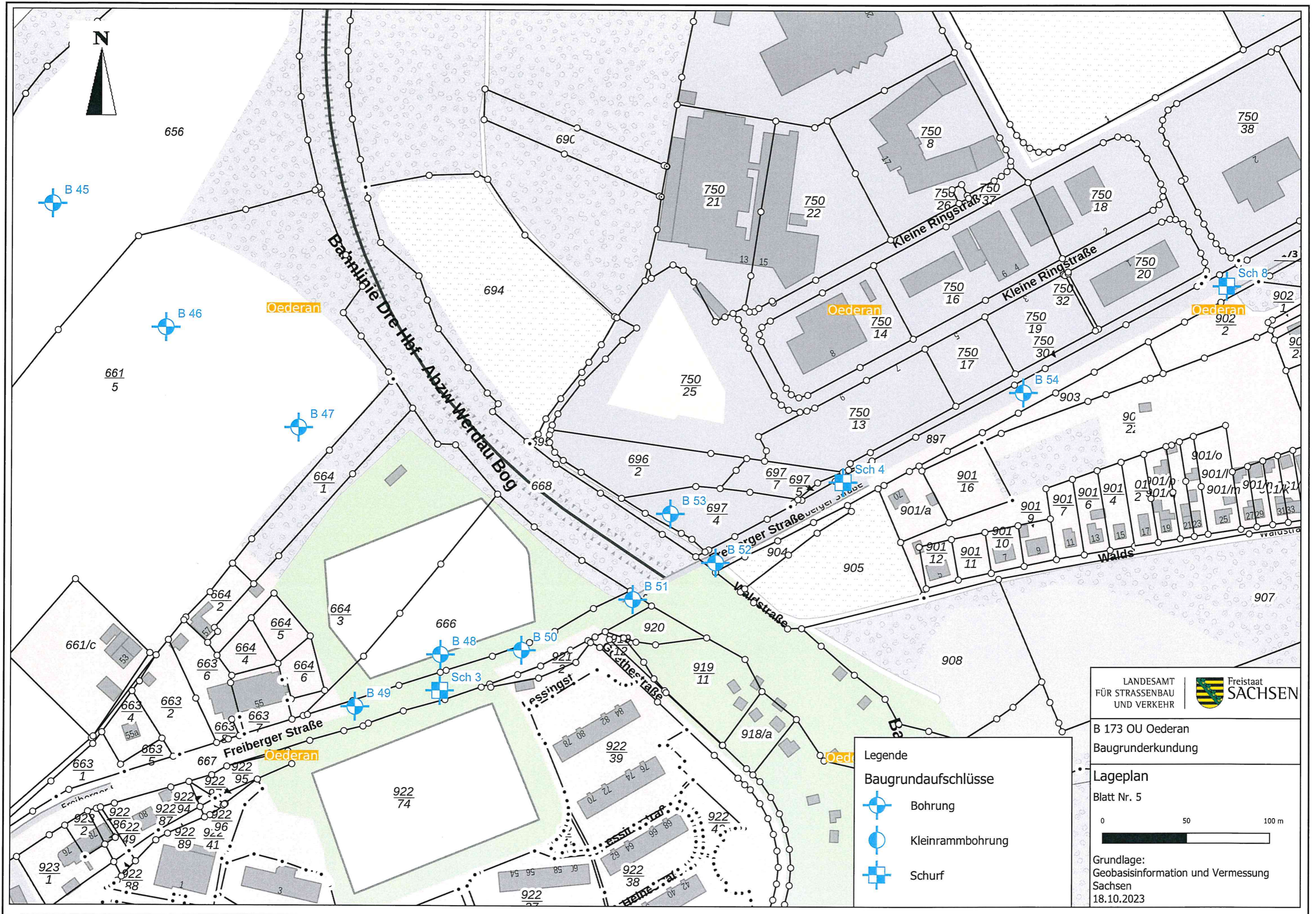
Lageplan
Blatt Nr. 4



Grundlage:
Geobasisinformation und Vermessung Sachsen
18.10.2023

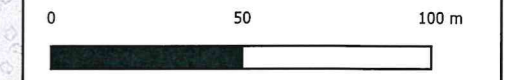
Legende
Baugrundaufschlüsse

-  Bohrung
-  Kleinrammbohrung
-  Schurf



B 173 OU Oederan
 Baugrunderkundung




Lageplan
 Blatt Nr. 5



Grundlage:
 Geobasisinformation und Vermessung
 Sachsen
 18.10.2023

Legende

Baugrundaufschlüsse

-  Bohrung
-  Kleinrammbohrung
-  Schurf